



2025 Onwards



1st Cycle - 2023



Estd. 2014



In Mumbai

2 years Full-Time Program

M.ARCH.*

REAL ESTATE DEVELOPMENT

Affiliated to **University of Mumbai** (Autonomous Program)
Approved by COA New Delhi, DTE & Govt. of Maharashtra



Be a Professional, in Business of Real Estate Development

Eligibility

B.Arch. with **min 50% aggregate** or **equivalent CGPI** & Qualify **PGETA** by COA, New Delhi.

Admission :

Centralized Admission Process of CET Cell

Accommodation Facility Available for Out-station Candidates.

Careers

- Developer & Project Manager
- Sustainable & Smart Development Expert
- Financial & Market Analyst
- Regulatory & Stake Holder Manager
- Acquisitions & Feasibility Specialist

Program Highlights

- Industry-Driven Curriculum
- Mumbai's Living Lab
- Interdisciplinary Approach
- Autonomous Flexibility
- Strong Industry Ties



Admission Enquiries Open

*Subject to approval from Council of Architecture, New Delhi, University of Mumbai & Maharashtra State Government

THAKUR SCHOOL OF ARCHITECTURE & PLANNING

(Autonomous Institute Affiliated to University of Mumbai, Approved by COA, DTE & Govt. of Maharashtra)

- Accredited with 'A' Grade by National Assessment and Accreditation Council (NAAC)
- Recognized under Section 2f of UGC Act, 1956 • ISO 21001 : 2018 Certified

B - Block, Thakur Educational Campus, Shyamnarayan Thakur Marg, Thakur Village, Kandivali (East), Mumbai - 400 101.
Tel.: 022-6730 8001 / 002 | Mob.: +91 93216 56571 | Fax : 022-2846 1890 | Email : tsap@thakureducation.org |
Website : www.tsapmumbai.in | www.thakureducation.org

Visionary Leaders are shaped to transform, the built environment.

This **cutting-edge program** combines **academic rigor** with **real-world application**, fostering **innovators** who will create **sustainable, resilient**, and **thriving urban ecosystems**.



Immersive Case Studies



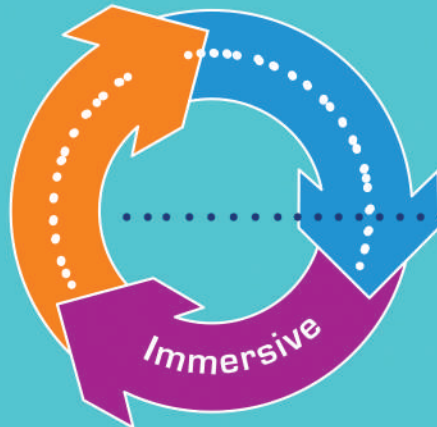
Real-World Project-Based Learning



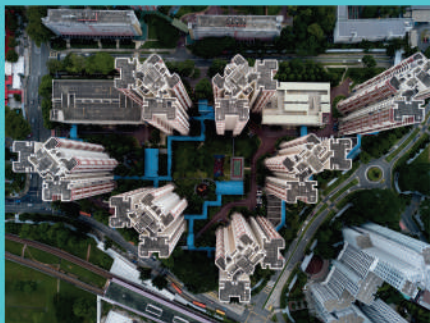
Experiential Gamification



Interdisciplinary Collaboration



Industry Mentorship



Capstone Projects



Simulation Based Learning



Industry Visits

For Admission Enquiries

 **022-6730 8001 / 002**  **+91 8655879242**

